

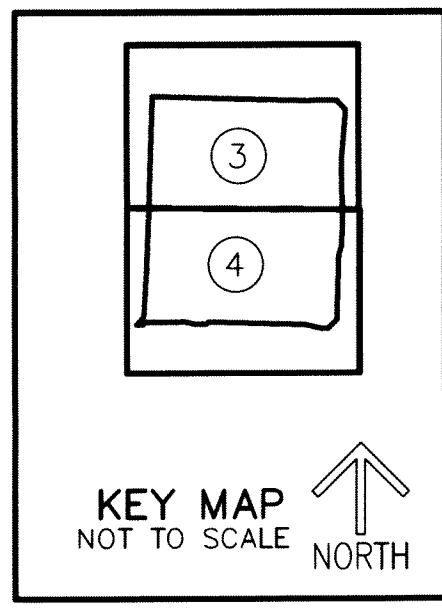
79

# WESTLAKE PLAZA

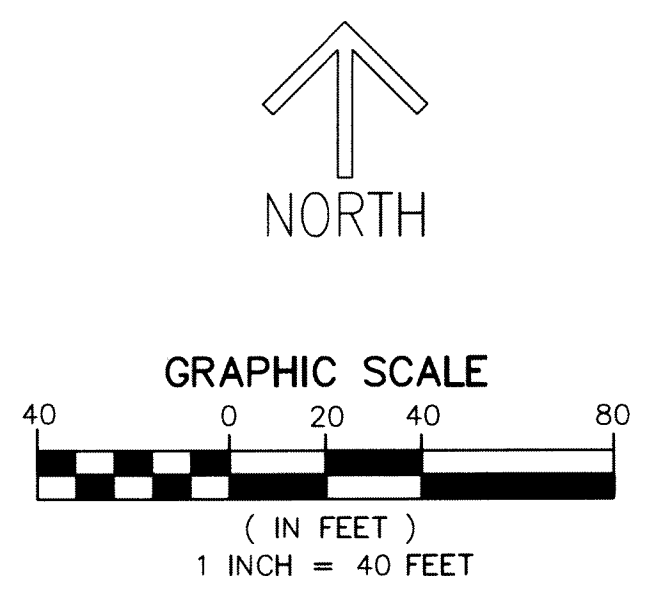
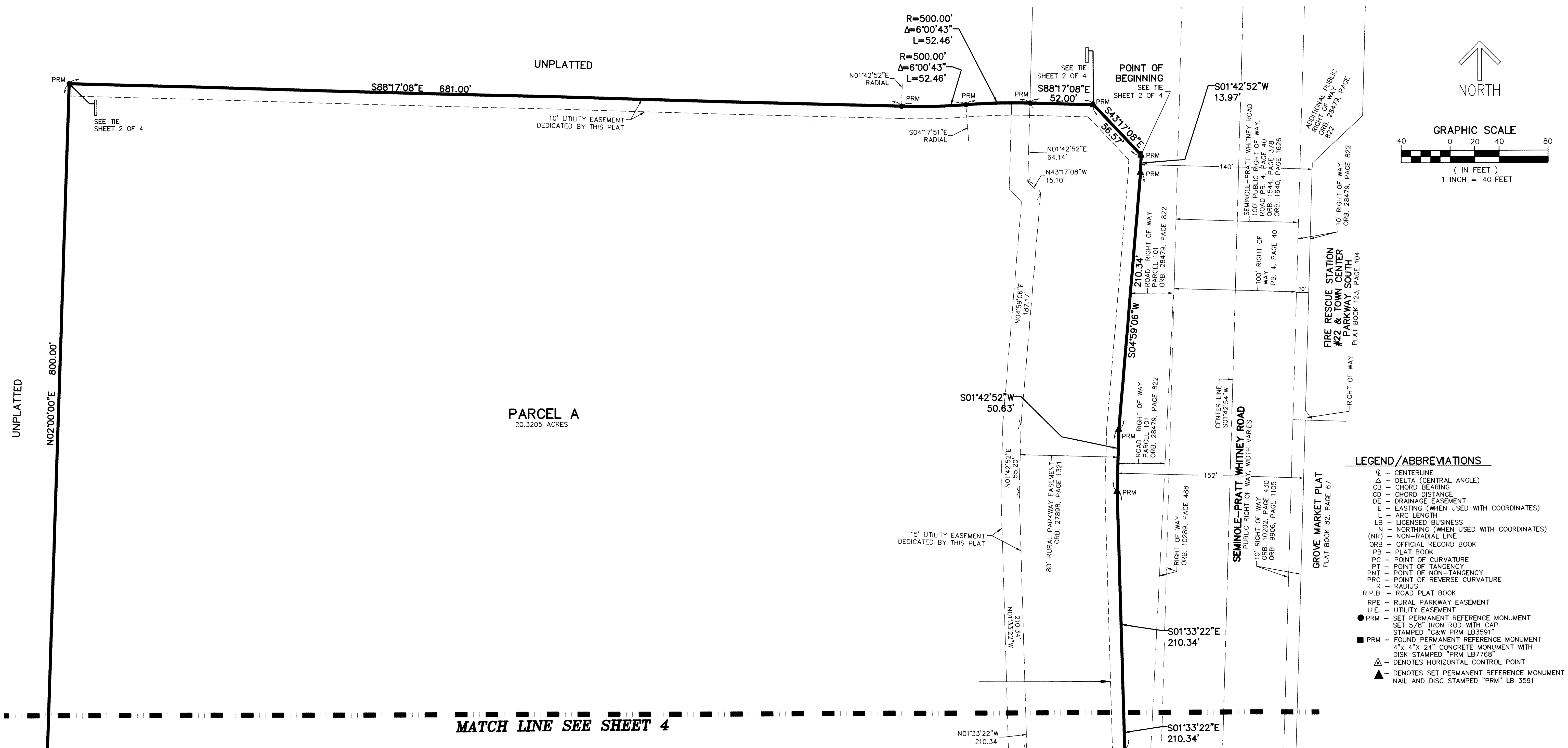
A REPLAT OF A PORTION TRACT M-3, PERSIMMON BOULEVARD WEST - REPLAT,  
RECORDED IN PLAT BOOK 129, PAGES 129 AND 130, OF THE PUBLIC RECORDS OF PALM BEACH COUNTY, FLORIDA  
AND A PORTION OF SECTION 1, TOWNSHIP 43 SOUTH, RANGE 40 EAST,  
CITY OF WESTLAKE, PALM BEACH COUNTY FLORIDA

THIS INSTRUMENT PREPARED BY  
DAVID P. LINDLEY  
OF  
**CAULFIELD and WHEELER, INC.**  
SURVEYORS - ENGINEERS - PLANNERS  
7900 GLADES ROAD, SUITE 100  
BOCA RATON, FLORIDA 33434 - (561)392-1991  
CERTIFICATE OF AUTHORIZATION NO. LB3591

**NOTES**  
**COORDINATES, BEARINGS AND DISTANCES**  
COORDINATES SHOWN ARE GRID  
DATUM = NAD 83 (2007 ADJUSTMENT)  
ZONE = FLORIDA EAST  
LINEAR UNIT = US SURVEY FEET  
COORDINATE SYSTEM 1983 STATE PLANE  
TRANSVERSE MERCATOR PROJECTION  
ALL DISTANCES ARE GROUND  
SCALE FACTOR = 1.0000017  
GROUND DISTANCE X SCALE FACTOR = GRID DISTANCE  
BEARINGS AS SHOWN HEREON ARE GRID DATUM,  
NAD 83 (2007 ADJUSTMENT), FLORIDA EAST ZONE.



SHEET 3 OF 4



- LEGEND/ABBREVIATIONS**
- CL - CENTERLINE
  - Δ - DELTA (CENTRAL ANGLE)
  - CB - CHORD BEARING
  - CD - CHORD DISTANCE
  - DE - DRAINAGE EASEMENT
  - E - EASTING (WHEN USED WITH COORDINATES)
  - L - ARC LENGTH
  - LB - LICENSED BUSINESS
  - N - NORTHING (WHEN USED WITH COORDINATES)
  - (NR) - NON-RADIAL LINE
  - ORB - OFFICIAL RECORD BOOK
  - PB - PLAT BOOK
  - PC - POINT OF CURVATURE
  - PT - POINT OF TANGENCY
  - PNT - POINT OF NON-TANGENCY
  - PRC - POINT OF REVERSE CURVATURE
  - R - RADIUS
  - R.P.B. - ROAD PLAT BOOK
  - RPE - RURAL PARKWAY EASEMENT
  - U.E. - UTILITY EASEMENT
  - PRM - SET PERMANENT REFERENCE MONUMENT SET 5/8" IRON ROD WITH CAP STAMPED "C&W PRM LB3591"
  - PRM - FOUND PERMANENT REFERENCE MONUMENT 4" x 4" x 24" CONCRETE MONUMENT WITH DISK STAMPED "PRM LB7768"
  - △ - DENOTES HORIZONTAL CONTROL POINT
  - ▲ - DENOTES SET PERMANENT REFERENCE MONUMENT NAIL AND DISC STAMPED "PRM" LB 3591